

## MaX2 / v1

The universal interface adapter MaX2 is the "little brother" of DIVA2 Base and fulfils its clearly defined tasks in vending machines. It can be connected to vending machines, cash registers and payment systems of all manufacturers and perfectly solves the tasks as an interface converter with complete EVADTS accounting either offline or online with cloud connection. Thanks to the multi-protocol connection, practically all vending machines can be connected.

Thanks to the ongoing development of the DIVA2 software platform, you benefit from continuous improvements. Functions can also be retrofitted as hardware modules via the *extension* port. This gives you a high level of investment protection, not least thanks to large reserves of performance and memory.



MaX2 replaces the previous MaX of the first generation.

### Advantages

- Full control of cash flows through the middle position between the machine and the payment systems.
- Support of all cash and cashless MDB (plug 'n play) payment systems on the market
- All known serial machine interfaces built in
- Extensive billing options in EVADTS format
- Telemetry: Cloud connection to Spicls for the services EVADTS, FOTA (firmware update), CLONE, LOGS
- Internal expansion option with *extension* (2G/LTE modem, keyboard, display, etc.)
- Uniform software platform of the DIVA2 family with permanent further development

### Applications

- Standardised and uniform (across all machines) EVADTS readout via cable, IrDA, LAN or GSM (retrofit)
- Adaptation of MDB payment systems (Cashless 1+2, coins, notes) to non MDB machines, coffee machines, etc.
- Solving MDB compatibility problems between payment system and vending machine
- Telemetry Box
- Connection of MDB card readers to cash registers via uniform cash register API (DeDesk DLL)

### Features

- DIVA2 basic functions as of SW version makalu
- SD card slot to expand the internal flash memory
- SET button for various interactions
- Configuration with handheld/ PC via IrDA, RS232 and network
- Robust plastic housing, semi-transparent
- Integrated IrDA interface for configuration and data transfer without cables
- User interface with LEDs (**red-green**) and buzzer
- Most important communication protocols and vending standards MDB, BDV, Exe, CCI
- Ethernet connection
- Plug and play hardware extensions: *Extensions*

Ordering coordinates:

Art.no.: D3.03.000.01  
Designation: Interface MDB/BDV/EXE/CCI auf MDB



**HUG-WITSCHI AG**

ELECTRONIC ENGINEERING

Auriedstrasse 10 - CH-3178 Bössingen  
phone +41 (0) 31 740 44 44 - fax +41 (0) 31 740 44 45

[info@hugwi.ch](mailto:info@hugwi.ch) - [www.payment-technology.com](http://www.payment-technology.com)

## Interfaces

flnr:

- s4: MDB Master
- LAN: Ethernet 10BASE-T/100BASE-TX (IEEE 802.3)
- s7.3: RS232, TTL, 5VDC
- SD/ SDHC Card slot



Left side:

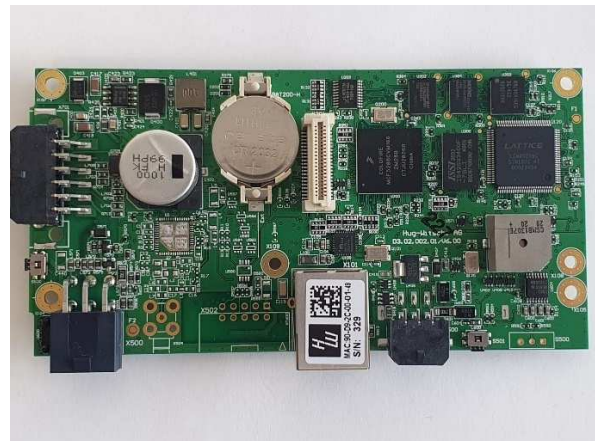
- s1: MDB Slave, BDV, Executive, CCI
- Power In
- SET button
- IrDA on board



One plug for all vending machine cables

## Technical data hardware

- Mounting: top-hat rail or Velcro fastener
- Input voltage: 12-45VDC,  
Stand-by current without load: 50 mA
- LEDs: Rt+Gn status, SD card busy, VM interface status
- Processor: 32 bit, 150 MHz
- Memory:
  - Flash: 8 MB Code, 1 MB Data-
  - RAM: 16 MB SDRAM, 512 kB NVRAM
- Serial interfaces:  
3 x asynchronous, 1x synchronous (SPI)
- RTC with replaceable Li-cell
- Housing made of polycarbonate, anthracite, luminescent
- IrDA interface compatible with all PDAs
- Buzzer
- Temperature range: 0.. 70° , bearing -40° ..- +85 °
- Humidity: 95% relative humidity, non-condensing
- Dimensions: 140 x 75 x 40 mm



Ordering coordinates:

Art.no.: D3.03.000.01  
Designation: Interface MDB/BDV/EXE/CCI auf MDB



**HUG-WITSCHI AG**  
ELECTRONIC ENGINEERING

Auriedstrasse 10 - CH-3178 Bösingen  
phone +41 (0) 31 740 44 44 - fax +41 (0) 31 740 44 45  
[info@hugwi.ch](mailto:info@hugwi.ch) - [www.payment-technology.com](http://www.payment-technology.com)

## Accessories

### Vending machine cable:

- Automatic cable MDB s1.4 Art. No. D3.01.003.08
- Automatic cable 2xMDB s1.4 Art. No. D3.01.003.87
- Automatic cable CCI s1.4 Art. No. D3.01.003.11
- Automatic cable Exe s1.4 Art. No. D3.01.003.05

### Miscellaneous:

- External display serial Art. No. HW.14.000.14
- Extension204: 4G/LTE Art. No. D2.43.000.06
- Extension204: GSM 2G Art. No. D2.43.000.03
- Extension216: Keyboard, Display Art. No. D2.64.000.xx
- External IrDA module: IrDA Eye Art. No. D2.51.000.01

## Differences between unit variants

Function	MaX (end of life)	MaX2
Telemetry: Send EVADTS via network	GSM (option)	LAN, GSM (option)
Vending machine interfaces	2 unit variants: VM: MDB, Exe CCI: CCI protocol via DB9	One variant for everything. However, CCI requires a connection cable

Ordering coordinates:

Art.no.: D3.03.000.01  
Designation: Interface MDB/BDV/EXE/CCI auf MDB



**HUG-WITSCHI AG**  
ELECTRONIC ENGINEERING

Auriedstrasse 10 - CH-3178 Börsingen  
phone +41 (0) 31 740 44 44 - fax +41 (0) 31 740 44 45  
[info@hugwi.ch](mailto:info@hugwi.ch) - [www.payment-technology.com](http://www.payment-technology.com)